

Introducing KfW IPEX-Bank

Our profile as specialist financier

KfW IPEX-Bank in brief

- Leading specialist financier **dedicated to project and export finance solutions** with decades of experience in this niche
- **Long-term financing approach, prepared to retain significant hold positions** in KfW IPEX-Bank arranged transactions
- **Stable business model with strong external ratings** Moody's (Aa2) and S&P (AA+)
- **100% subsidiary** of Germany's promotional bank **KfW** Moody's (Aaa), S&P (AAA), Fitch (AAA)

Our value proposition

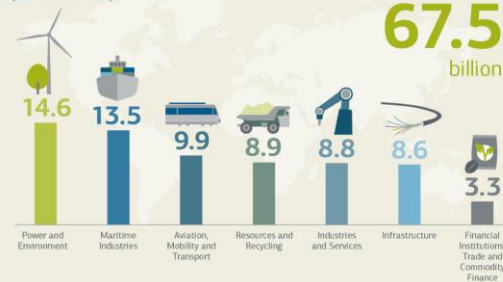
- Structuring expertise with complex projects in **key industry sectors** globally
- **Renowned for its expertise** in structuring export financings with or without ECA cover
- Recently awarded **best bank in export finance for 2021** in the prestigious **Trade & Export Finance (TXF) Exporters' Choice Award**:
 - Ranked among the top 3 banks for the fifth time
 - Only bank receiving the award 5 years in succession
- **In-house technical & environmental experts** providing support for bankability and ECA requirements
- **Syndication focus on complex structured finance solutions** in line with the bank's general business model



Sectoral approach

Volume of lending 2020

(EUR in billions)



Global orientation – regional split

Volume of lending 2020

(EUR in billions)

